



Installation – Eplan ERP/PDM Integration Suite

Eplan Platform Version 2026

Status: 01/2026

ePLAN

Integration Suite

EPLAN GmbH & Co. KG
Technical information

Installation – Eplan ERP/PDM Integration Suite

Eplan Platform Version 2026

Status: 01/2026



Copyright © 2025 EPLAN GmbH & Co. KG

EPLAN GmbH & Co. KG assumes no liability for either technical or printing errors, or for deficiencies in this technical information and cannot be held liable for damages that may result directly or indirectly from the delivery, performance, and use of this material.

This document contains legally protected information that is subject to copyright, trademark law, design law and other legal provisions. All rights are protected. This document or parts of this document may not be copied or reproduced by any other means without the express prior consent of EPLAN GmbH & Co. KG.

The software described in this document is subject to a licensing agreement and, if applicable, other contractual provisions. The utilization and reproduction of the software are only permitted in accordance with the specifications of this license agreement and, if applicable, any further existing contractual specifications.

RITTAL is a registered trademark of Rittal GmbH & Co. KG.

Eplan, Eplan Electric P8, Eplan Fluid, Eplan Preplanning, Eplan Pro Panel, Eplan Smart Wiring, Eplan Smart Mounting, Eplan Harness proD, Eplan eVIEW, Eplan eBUILD, Eplan eMANAGE, Eplan eSTOCK, Eplan Engineering Configuration (EEC), Eplan Cogineer and Eplan Cable proD are registered trademarks of EPLAN GmbH & Co. KG. Eplan ERP/PDM Integration Suite (Eplan EPIS) and Eplan Smart Production Collection are product names of EPLAN GmbH & Co. KG.

All other product names and trade names are trademarks or registered trademarks of their respective owners.

Eplan uses the Open Source software 7-Zip (7z.dll), Copyright © by Igor Pavlov. The source code of 7-Zip is subject to the GNU Lesser General Public License (LGPL). The source code of 7-Zip and details on this license can be found on the following Web site: <http://www.7-zip.org>

Eplan uses the Open Source software Open CASCADE, Copyright © by Open CASCADE S.A.S. The source code of Open CASCADE is subject to the GNU Lesser General Public License (LGPL). The source code of Open CASCADE and details on this license can be found on the following website: <http://www.opencascade.org>

Eplan makes an import function available which uses ECLASS. The use of the ECLASS standard is subject to a license and requires registration and downloading in the download portal: <http://www.eclassedownload.com>

Eplan uses the dotNetRDF © library: <http://www.dotnetrdf.org>, Copyright (c) 2009-2013 dotNetRDF Project (dotnetrdf-develop@lists.sf.net). The source code is subject to the MIT license: <https://opensource.org/licenses/MIT>

Eplan uses Google Chromium ©. <https://www.chromium.org>, Copyright © 2015 The Chromium Authors. The source code is subject to the BSD license.

Eplan uses the Chromium Embedded Framework ©. <https://bitbucket.org/chromiumembedded/cef>, Copyright © 2008-2020 Marshall A. Greenblatt. Portions Copyright © 2006-2009 Google Inc. The source code is subject to the BSD license.

Eplan uses CEFSharp ©. <https://cefsharp.github.io>, Copyright © The CefSharp Authors. The source code is subject to the BSD license.

Eplan uses WebView 2 ©, <https://cefsharp.github.io>, Copyright © The WebView 2 Authors. The source code is subject to the BSD license.

Eplan uses Microsoft Unity ©. <https://github.com/unitycontainer/unity>, Copyright © Microsoft. The source code is subject to the Apache license, Version 2.0.



This application incorporates Open Design Alliance software pursuant to a license agreement with Open Design Alliance. Open Design Alliance Copyright © 2002–2020 by Open Design Alliance. All rights reserved.

Eplan uses the PDFlib library, Version 9.2.0, Copyright © by PDFlib GmbH. Copyright reserved.

Eplan uses the PLOP library, Version 5.3p1, Copyright © by PDFlib GmbH. All rights reserved.

The license management portion of this Licensee Application is based upon one or more of the following copyrights: Sentinel® RMS, © 2005 SafeNet, Inc., all rights reserved, and Sentinel® EMS, © 2009 SafeNet, Inc., all rights reserved. Sentinel® is a registered trademark of SafeNet, Inc.

Eplan uses the the Open Source software QR Code generator library. <https://www.nayuki.io/page/qr-code-generator-library>, Copyright © by Project Nayuki. The source code is subject to the MIT License.

The complete license texts for the Open Source licenses mentioned above are available in the following file (for on-premises programs):

<Installation directory>\bin\License.txt

The complete license texts for Eplan Cloud applications and services are available at the following link:

<https://goto.eplan.com/EplanCloudLicTxt>



Table of contents

- Table of contents 4**
- Notes for the Reader 5**
- Restrictions 7**
- Topology 8**
- Installation ERP/PDM Integration Suite 10**
 - Synchronizer 10**
 - Installation Microsoft ODBC Driver 17 for SQL Server® 10
 - Installation Eplan Local Parts Management (LPM) 10
 - Installation 11
 - Start Windows service 15
 - Add-in 18**
 - Installation Eplan platform product 18
 - Installation ERP/PDM Integration Suite 18
 - Silent Mode Installation 23**
 - Integration Suite and MSI parameters 24
 - ADDLOCAL list 24
 - Language Code list 25

Notes for the Reader

Before you begin reading, please note the following symbols and styles used in this document:

Warning:

Text preceded by this symbol contains a warning; you should be absolutely sure to read this warning before proceeding!!

Note:

Text preceded by this symbol contains extra notes.

Tip:

Useful tips to facilitate your interaction with the program are presented after this image.

Example:

Examples are highlighted by this symbol.

- User interface elements are marked in **bold** so they can immediately be located in the text.
- *Italic* text provides particularly important information that you should definitely pay attention to.
- Code examples, directory names and direct entries (among other things) are displayed in a `non-proportional` font.
- Function keys, keyboard keys, and buttons within the program are shown in square brackets (e.g., **[F1]** for the "F1" function key).
- To improve the flow of the text, we often use "menu paths" in this document (for example, **Help > Contents**). In order to find a particular program function, the menus and options shown in a menu path must be selected in the sequence shown. For example, the menu path mentioned above calls up the Eplan help system.



- The operating information provides step-by-step instructions for reaching specific targets, and in many places, after the right-arrow symbol ⇒ you'll also find the program's reaction to your action.
- In combination with settings or fields (e.g., check boxes) which can only be switched on or off, in this document we often use the term "activate" (after which the setting is active) and "deactivate" (after which the setting is inactive)

Restrictions

The Integration Suite can only be installed on Eplan-approved operating systems. For more information, visit the Eplan homepage.

.Net Framework 4.8.1 is required for the installation.

CPU with the instruction set AVX2 is required for the installation.

WebView2 Runtime is required for the installation.

The following Eplan licenses are required:

- For ERP Integration (Only Parts Sync and BOM)
 - Eplan Electric P8 Advanced
 - or
 - Eplan Electric P8 Pro

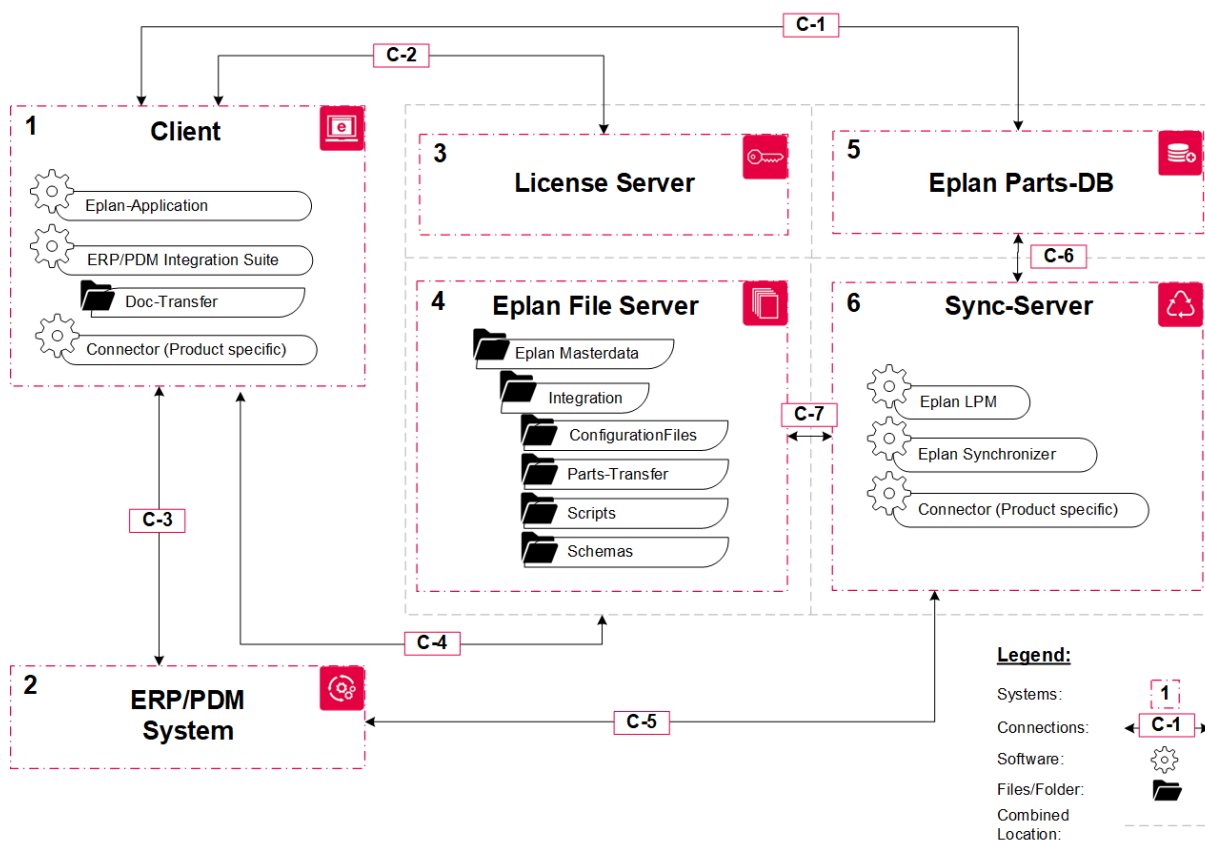
- For ERP/PDM Integration (including Documents)
 - Eplan Electric P8 Premium
 - or
 - Module: ERP/PDM Integration Suite

Topology

The topology of the ERP / PDM Integration consists of different areas

1. Eplan client
2. ERP/PDM system
3. Eplan license server
4. Eplan file server
5. Eplan parts DB
6. Synchronization Server

The areas 3-6 can be combined in one or more systems/servers.



On the **Eplan client (1)** next to the Eplan platform product (e.g., Electric P8), the module ERP/PDM Integration Suite is installed. Local configurations are additionally also stored on the clients.

The **ERP/PDM system (2)** is where Eplan should be integrated.

The **Eplan license server (3)** contains the Eplan license including the license for ERP/PDM Integration Suite.

The **Eplan file server (4)** is, in general, the location for the base data of Eplan, e.g., macros, drawing frames, documents. In this area, additional global configurations of the integration are stored.

The **Eplan parts database (5)** is since 2022 a SQL or ALK-based database and manages the parts used in the Eplan platform products.

The **synchronization server (6)** is used for the synchronization and partly for the replication of parts stored in the database (5).

During a kickoff workshop, the definition of the paths to the directories is to figure out. The placing affects the Synchronizer rights management in context with the SQL database (more details can be found in the chapter **5 Synchronizer**).

Installation ERP/PDM Integration Suite

The installation of the ERP / PDM Integration Suite consists of several parts.

1. Synchronizer installation on the application server (in most of all cases).
2. Add-in installation per client

Synchronizer

Synchronizer manages the synchronization of the parts data with the ERP / PDM system.

This is a Windows Service and must be installed on a Windows OS.

Installation Microsoft ODBC Driver 17 for SQL Server®

The Eplan parts synchronization requires the 'Microsoft ODBC Driver 17 for SQL Server®' driver for the connection to an SQL server.

The current version of this driver can be found on the Microsoft website.

<https://aka.ms/downloadmsodbcsql>

Installation Eplan Local Parts Management (LPM)

Since Eplan version 2023, it is required to install Eplan Local Parts Management (LPM) on the Synchronization server where the Synchronizer is installed.

 **Note:**

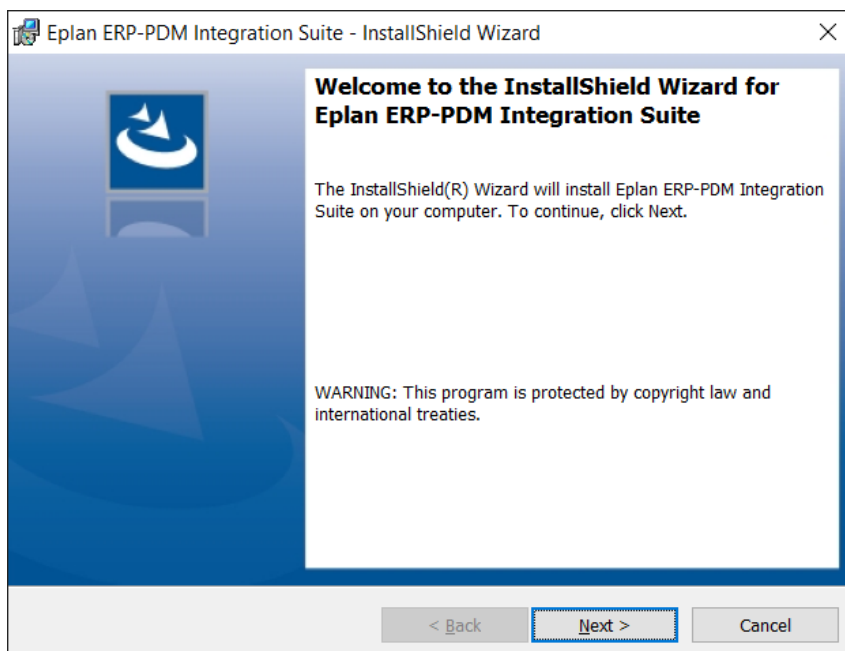
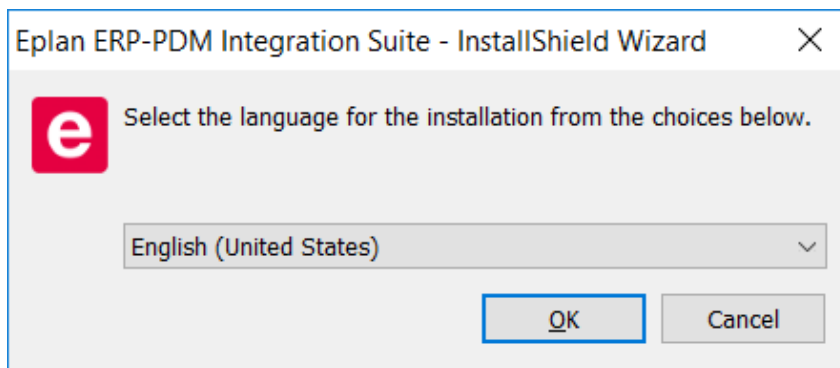
If the necessary license is not generated automatically, it is required to execute the command

```
"C:\Program Files\EPLAN\Common\Configurator.exe" /CPM  
/AUTO
```

The license file should be created after execution of this command.

Installation

Start `Setup.exe` out of the installation package.



Installation – Eplan ERP/PDM Integration Suite

Eplan Platform Version 2026

Status: 01/2026



Eplan ERP-PDM Integration Suite - InstallShield Wizard

License Agreement

Please read the following license agreement carefully.

Copyright © EPLAN GmbH & Co. KG

This program is subject to copyright and is protected by international provisions. This program or parts of the program may not be copied, reproduced or duplicated in any form whatsoever without the prior written consent of EPLAN GmbH & Co. KG. Contraventions will be prosecuted under civil and criminal law.

I accept the terms in the license agreement Print

I do not accept the terms in the license agreement

InstallShield

< Back Next > Cancel

Eplan ERP-PDM Integration Suite - InstallShield Wizard

Customer Information

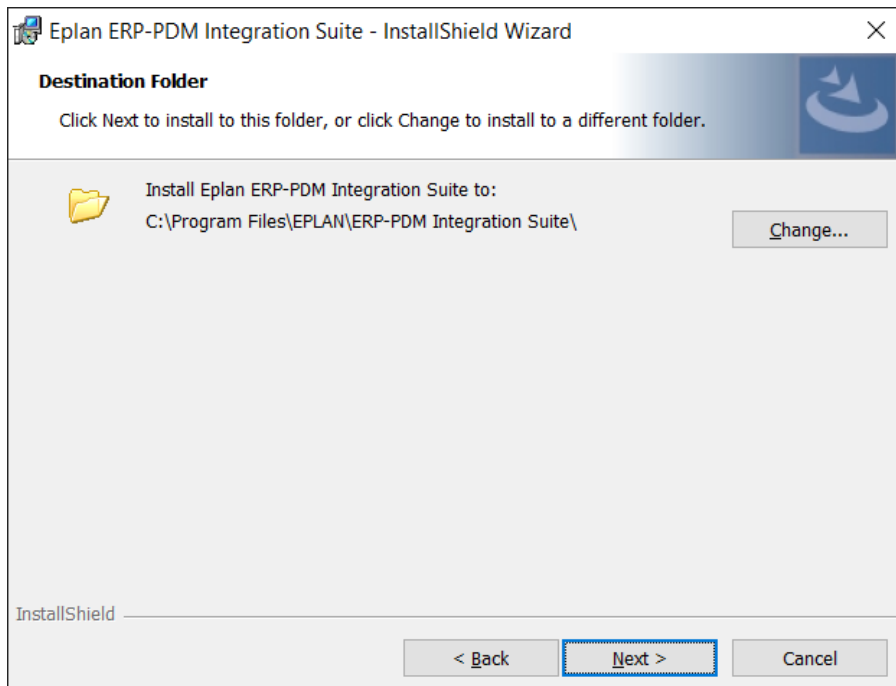
Please enter your information.

User Name:
Name

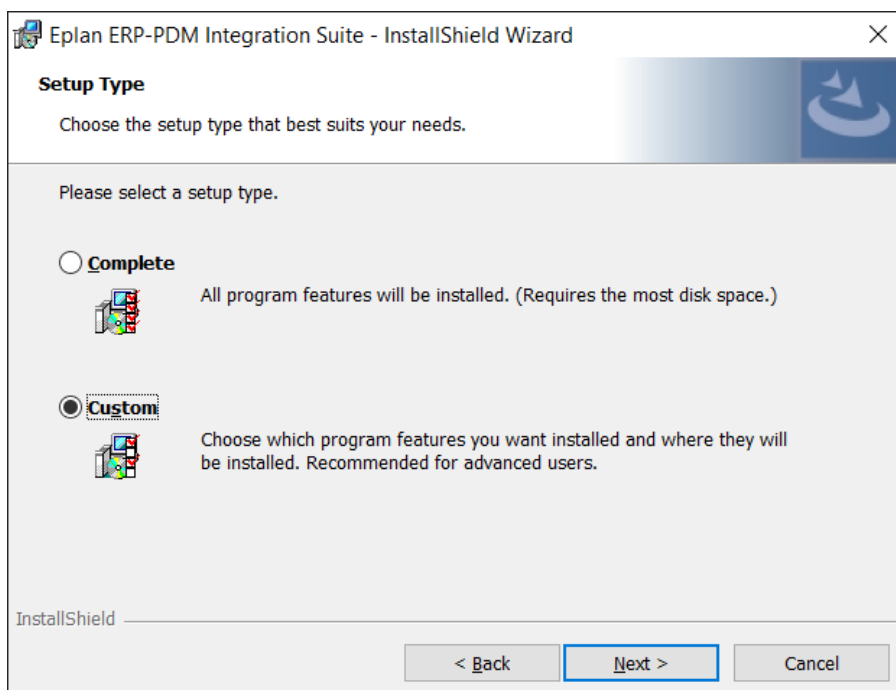
Organization:
Company

InstallShield

< Back Next > Cancel



Standard Windows Installation directory (if possible, don't change)

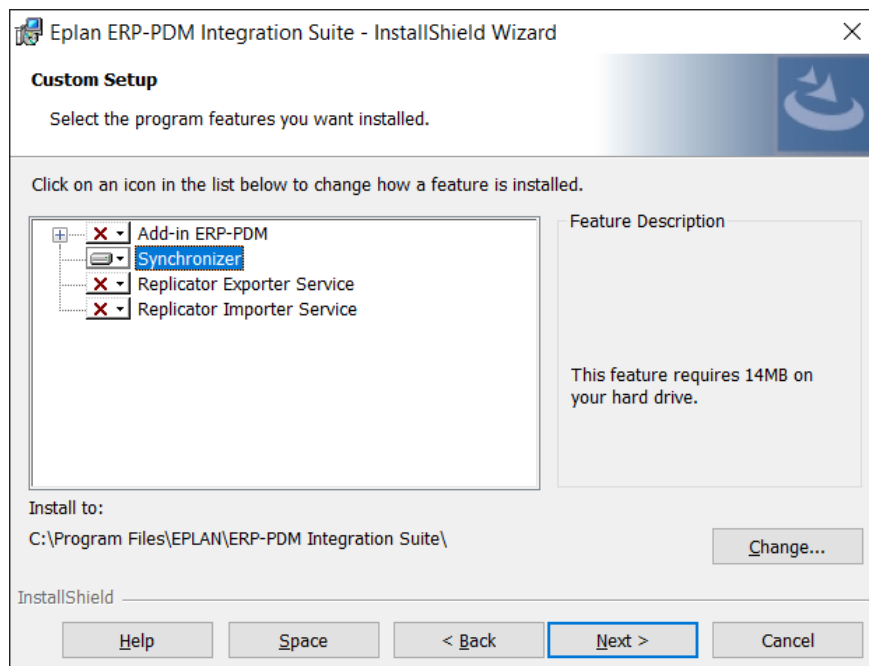


Please select **Custom**

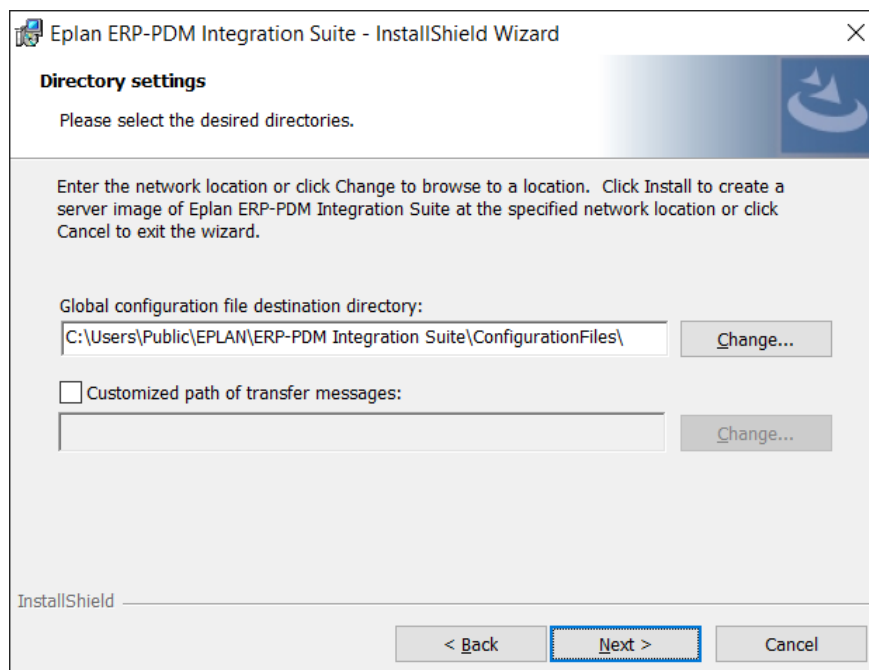
Installation – Eplan ERP/PDM Integration Suite

Eplan Platform Version 2026

Status: 01/2026



Please only select Synchronizer



The global configuration does not influence Synchronizer. Press **Next** and **Install**. Finish.

The Synchronizer configuration is stored under:

C:\Users\Public\EPLAN\ERP-PDM Integration Suite in the XML files:

- EPLAN2026_DALC_Config.xml (Version 2026)
- ERP-PDM_SynchronizerConfig.xml

Note:

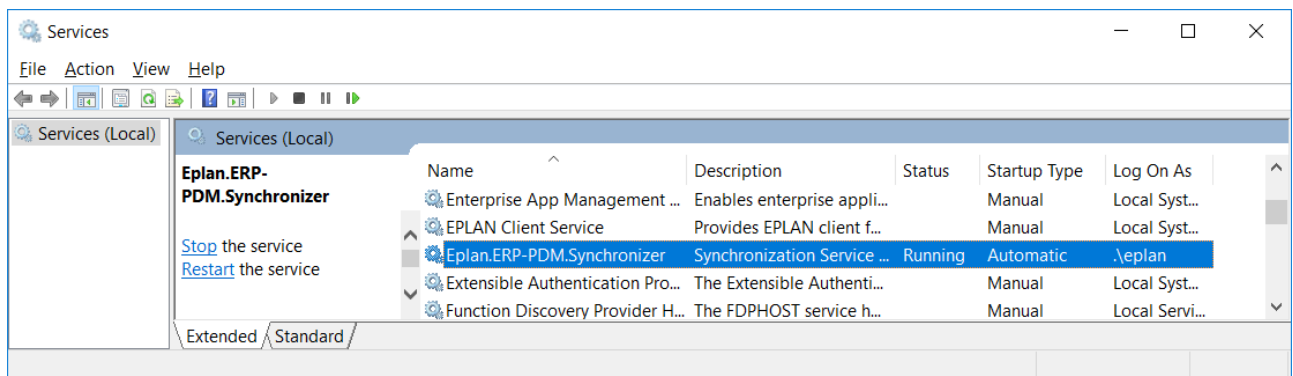
It is required to enter the target/source Eplan parts database in EPLAN2026_DALC_Config.xml before proceeding.

Start Windows service

Restart the service after every Synchronizer configuration.

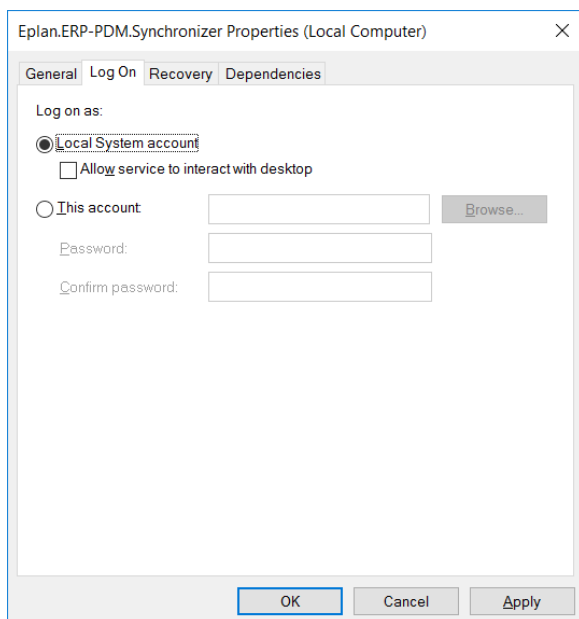
If possible, check Log file; typically stored under:

C:\Users\Public\EPLAN\ERP-PDM Integration Suite\LogFiles



Due to the fact that this is a Windows service following restrictions exist:

- Start as standard service with the local **service account**.
The local service account is a special predefined account similar to an authenticated user account. The local service account has the same access right to resources and objects like members of the group User. The system can be protected through limited access if single services or processes are in danger. Services, which are proceeded with the local service account, connect as zero session without login information to network resources.

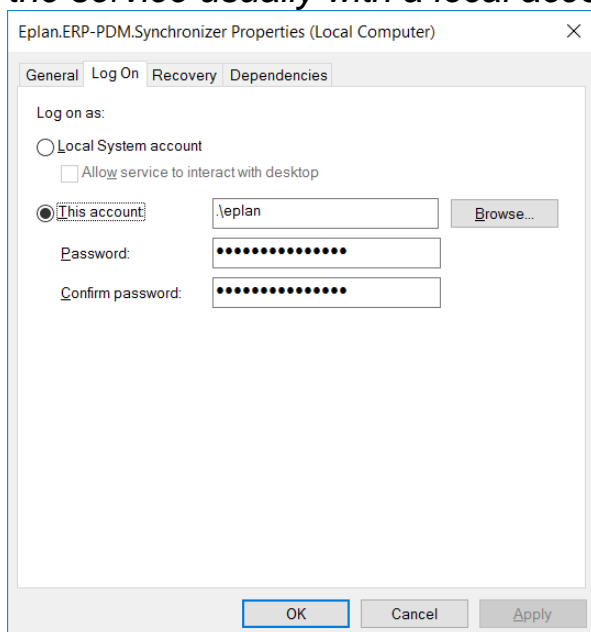


The local service account needs access rights to transfer directories.

(Possible, if transfer directories are on the same server)

- Start service with user rights:
To have the possibility to connect domains across to the transfer directories, the service needs to start with user rights.

The user rights have to be inserted after every update. Eplan starts the service usually with a local account.



The main topic of the Synchronizer is access to the Eplan parts database. This has to be customized for different authorization levels. Possibilities:

- **User account (preferred method):**
Start as standard service with **user rights** with authorization to transfer directories and authorization in SQL (Windows authentication)
- **Local service account:**
Start as standard service with the **local service account** with authorization to the transfer directories and authorization in SQL (Windows authentication)
- **Local service account including SQL account:**
Start as standard service with the **local service account** with authorization to transfer directories:
Insert SQL user and password to Synchronizer DALC configuration. The password can be encrypted with the included PDM.Password.Tool under Services/Components.
- **User account including SQL account:**
Start as standard service with **user rights** with authorization to transfer directories:
Insert SQL user and password to Synchronizer DALC configuration. The password can be encrypted with the included PDM.Password.Tool under Services/Components.

A small icon of a document with a red arrow pointing to it, indicating a note or warning.

Note:

If you are using SQL database, please set the Startup Type of the Service to **Automatic (delayed)**, to make sure the service can connect to the SQL database.

Add-in

The Add-in must be installed to every client on order to manage the projects, bill of materials and neutral documents in ERP/PDM.

The configuration is divided into local- and global files.

Local location:

C:\Users\Public\EPLAN\ERP-PDM Integration Suite\ConfigurationFiles

The local configuration contains a link to the directory of the global configuration and log files.

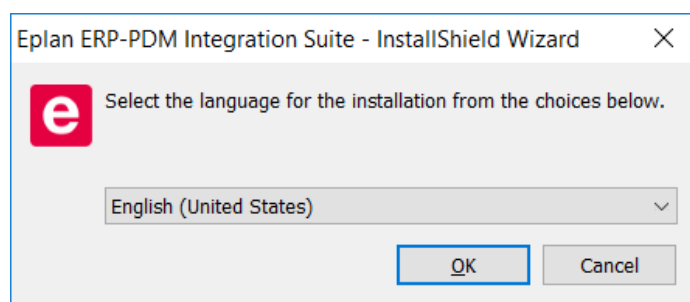
The global configuration contains data for every client and shall be stored in a transfer directory where everyone has access.

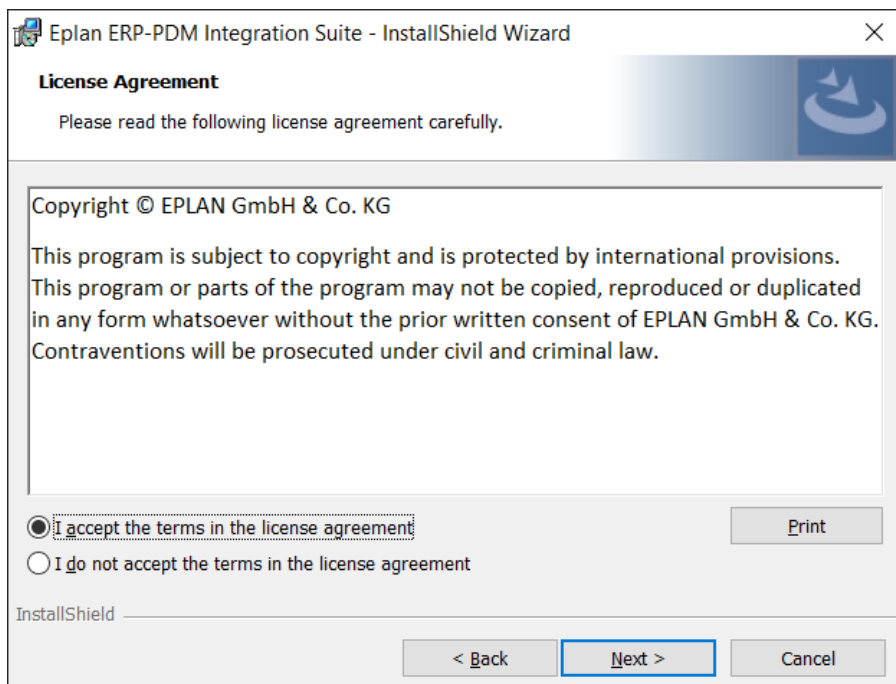
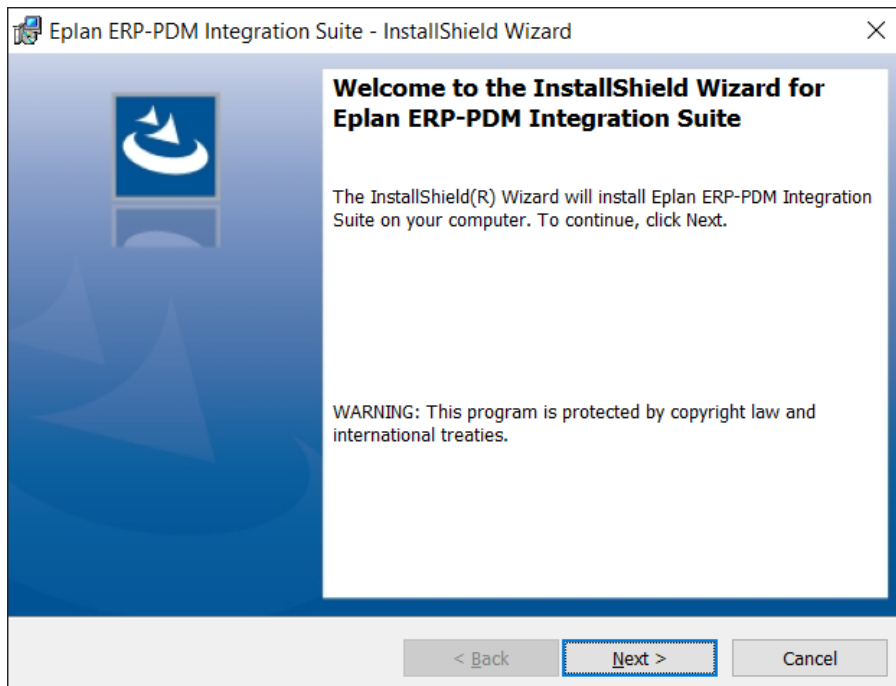
Installation Eplan platform product

Before installing the ERP/PDM Integration Suite it is necessary to install a Eplan platform product first (e.g., Electric P8). More details regarding the installation can be found on the Eplan homepage.

Installation ERP/PDM Integration Suite

Start “Setup.exe” from the installation package.





Installation – Eplan ERP/PDM Integration Suite

Eplan Platform Version 2026

Status: 01/2026



Eplan ERP-PDM Integration Suite - InstallShield Wizard

Customer Information

Please enter your information.

User Name:
Name

Organization:
Company

InstallShield

< Back Next > Cancel

Eplan ERP-PDM Integration Suite - InstallShield Wizard

Destination Folder

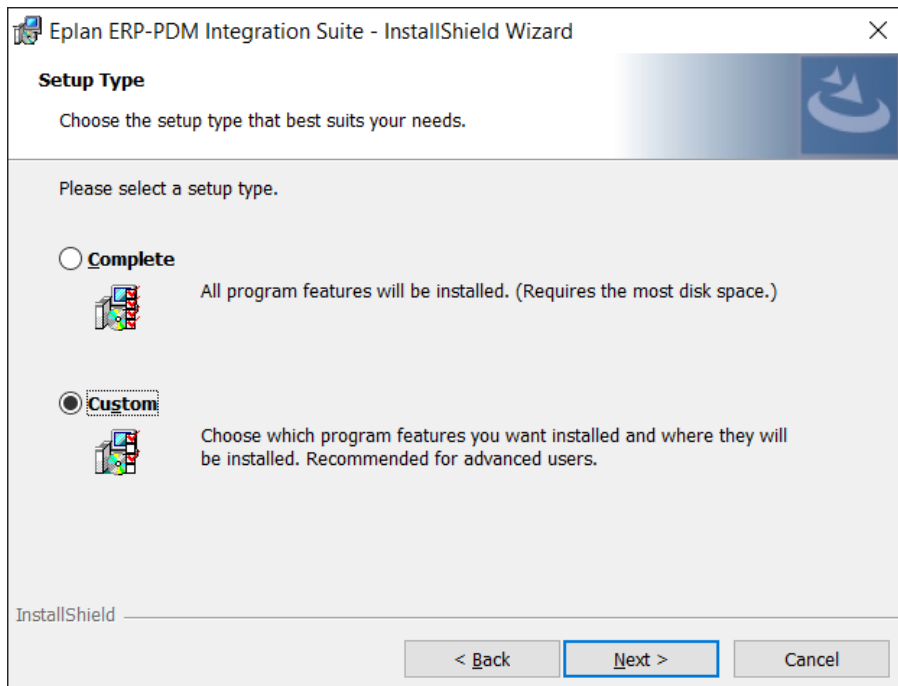
Click Next to install to this folder, or click Change to install to a different folder.

Install Eplan ERP-PDM Integration Suite to:
C:\Program Files\EPLAN\ERP-PDM Integration Suite\ Change...

InstallShield

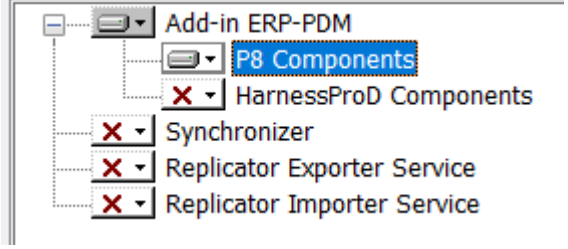
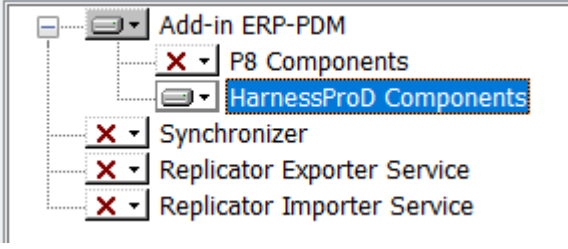
< Back Next > Cancel

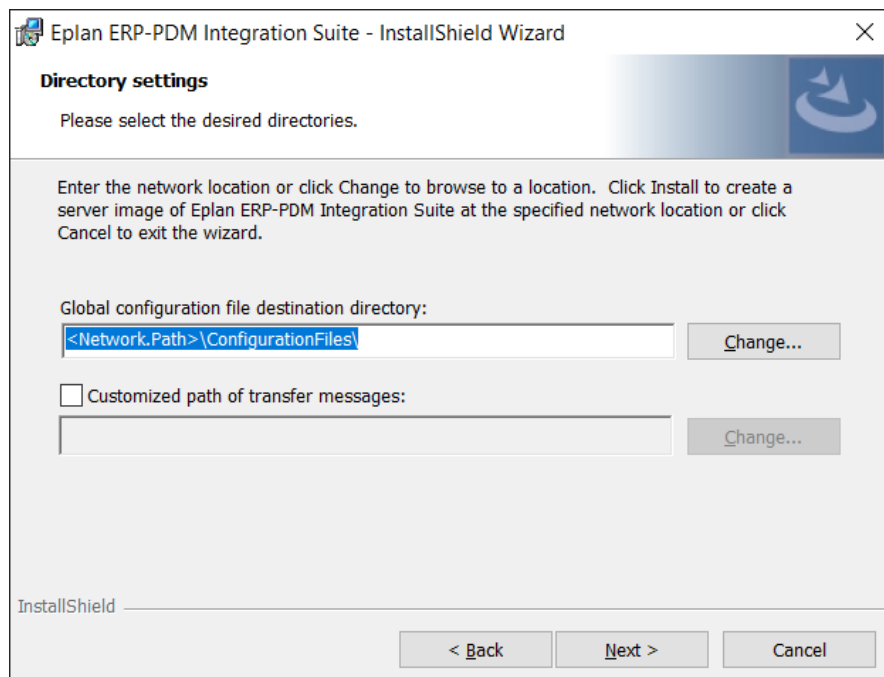
Standard Windows Installation directory (if possible, don't change)



Always select **Custom**

Depending on the application you want to integrate, please, select the correct **Components**.

<i>For Eplan platform</i>	<i>For Eplan Harness proD</i>
	
<p>Install Add-in ERP-PDM, P8 Components!</p>	<p>Install Add-in ERP-PDM, Harness proD Components!</p>



It is necessary to insert here the path to the global configuration! Press next and install. Finish.

The global configurations of Eplan Electric P8 and Harness proD Add-in are located on the server, for example:

...\EPLAN\ERP-PDM Integration Suite\ConfigurationFiles in XML format

- ERP-PDM_Config.xml
- HpD_Config.xml

The local configuration files for Eplan Platform (ERP-PDM_Local_Config.xml) and Eplan Harness proD (HpD_Local_Config.xml) are located on the client in the fix folder:

C:\Users\Public\EPLAN\ERP-PDM Integration Suite\ConfigurationFiles

After configuration of the Add-in, it is necessary to restart Eplan.

Possibly check the log file ERP-PDM_EplAdd-in.log.

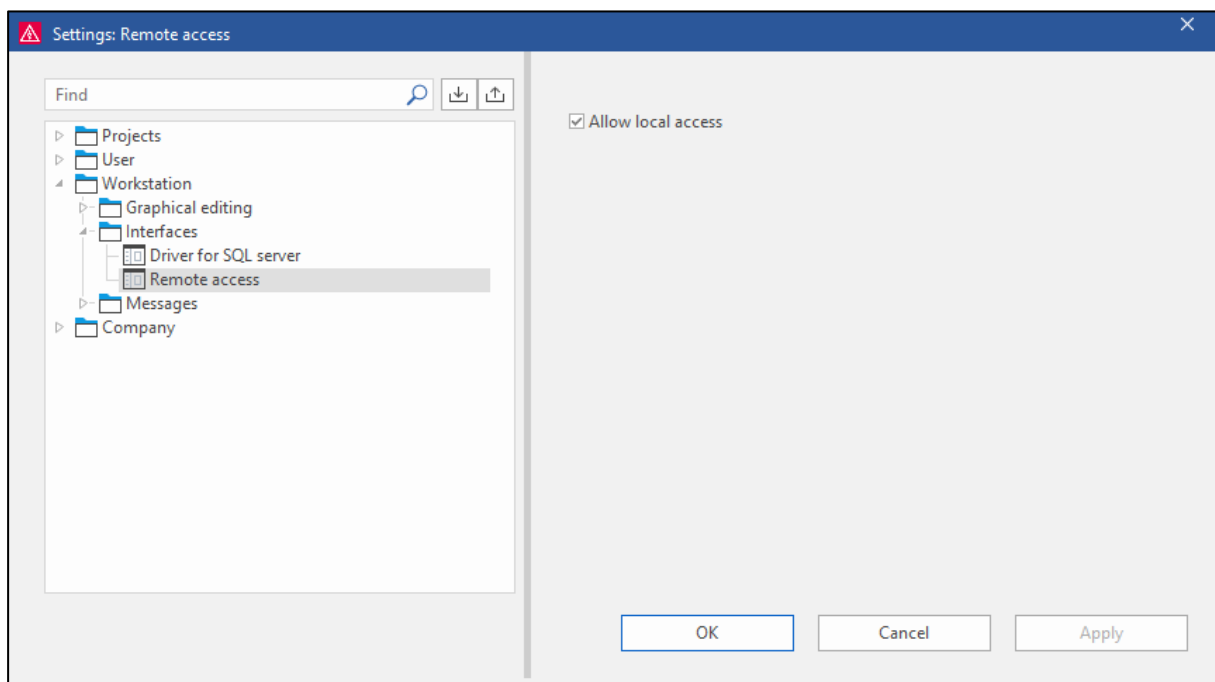
This is stored typically in the following directory:

C:\Users\Public\EPLAN\ERP-PDM Integration Suite\LogFiles

Activate Local Access for Remoting

Starting Eplan Platform 2025 Update 5 and 2026 Update 2, a setting for enhanced security has been introduced and must be activated for the ERP-PDM Integration Suite to work.

Open the Eplan Settings and navigate to **Workstation > Interfaces > Remote access** and activate the checkbox for **Allow local access**.



Silent Mode Installation

The silent installation mode is available for every component of the ERP-PDM Installation Suite and must run with Administrator rights. It is also possible to define every possible consolation of the ERP/PDM Integration Suite products in a setup.bat file. You can find the predefined setup.bat files of the installation package under file path:

```
...\Services\Command
```

Integration Suite and MSI parameters

Parameter	Description
/V	Defines a list of parameters for the setup configuration. Parameters should be list in quotes.
/S	Silent mode for MSI package in the background. E.g., language package.
/L	Language setting
/quiet	Defines that all quotes in /V parameter should be passed in fully silent mode.
INSTALLDIR	Defines where Integration Suite should be installed. E.g. =\"C:\Example\ERP_PDM_Integration_Suite\"
GCONFIG	Parameter points to global configuration path. E.g. =\"C:\Users\Public\EPLAN\ERP-PDM Integration Suite\ConfigurationFiles\"
ADDLOCAL	Defines the available components of the EPIS installation package, which shall installed. See below list of possible options
TRANSFERMESSAGES	It is possible to predefine optional transfer path for messages directory. E.g. =%PUBLIC%%COMP%
SKIPCHECKGLOBALCONFIG	Defines if the global configuration file will be updated during installation. 0=configuration will be updated 1=configuration will be not updated

ADDLOCAL list

Parameter	Description
All	Defines that all components off the installation will be installed.
Base,Add_in,P8_Addin	Defined that Eplan platform AddIn will be installed (e.g. Electric P8)
Base,Add_in,Harness-ProD_Addin	Defined that Eplan Harness proD AddIn will be installed
Synchronizer	Ex- and import for Eplan platform and Eplan Harness proD. For synchronizing parts with the ERP/PDM system.

Replicator_Exporter	Export service for Eplan platform. For exchanging parts data with additional locations.
Replicator_Importer	Import service for Eplan platform. For exchanging parts data with additional locations.

Language Code list

Language	Language Code
EN	"1033"
DE	"1031"
PL	"1045"
CZ	"1029"
FR	"1036"
RU	"1049"
HU	"1038"
IT	"1040"
ES	"1034"
NL	"1043"
DA	"1030"
PTB	"1046"
PTP	"2070"
SV	"1053"
KO	"1042"
CN	"1028"

Additionally, it is possible to use more options from the Microsoft Installer (MSI) command line to deeper set up the installation batch file. These commands are not mentioned in this document and can be found easily



via search engines. You also can set different Administrator right commands in the batch file independent of the Eplan ERP/PDM Installation Suite quotes.



Example:

Find below an example for a possible installation command line for a silent mode installation ERP/PDM Integration Suite of Platform Addin and Harness proD Addin under a default storage path in language English.

Setup.exe:

```
"C:\Install\EPLAN_ERPPDM_Integration_Suite_2026\setup.exe"  
/S /L"1033"  
/V"ADDLOCAL=Base,Add_in,P8_Addin,HarnessProD_Addin  
SKIPCHECKGLOBALCONFIG=1  
GCONFIG="C:\Users\Public\EPLAN\ERP-PDM Integration  
Suite\ConfigurationFiles\  
INSTALLDIR="C:\Example\ERP_PDM_Integration_Suite\  
/quiet"
```

MSI-Package:

```
msiexec.exe /i "C:\Users\eplan\Desktop\EPLAN_ERPPDM_Integration_Suite_2026\Eplan ERP-PDM In-  
tegration Suite x64.msi" /quiet INSTALLDIR="C:\Program  
Files\EPLAN\ERP-PDM Integration Suite" ADDLOCAL="  
Base,Add_in,P8_Addin,HarnessProD_Addin"  
GCONFIG="C:\Users\Public\EPLAN\ERP-PDM Integration  
Suite\ConfigurationFiles\  
"
```



EPLAN GmbH & Co. KG
An der alten Ziegelei 2
40789 Monheim am Rhein · Deutschland
Telefon: +49 (0) 21 73 / 39 64-0
Telefax: +49 (0) 21 73 / 39 64-25
Info@eplan.de · www.eplan.de